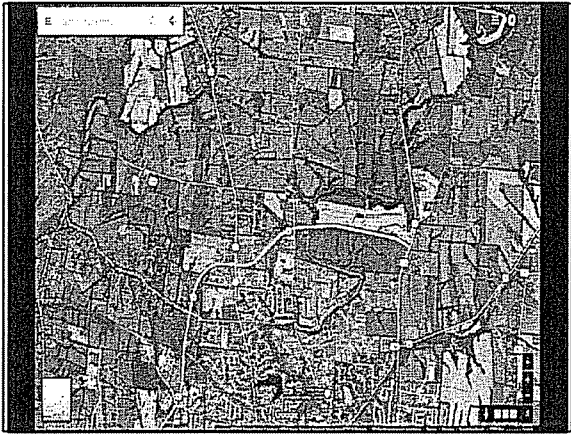
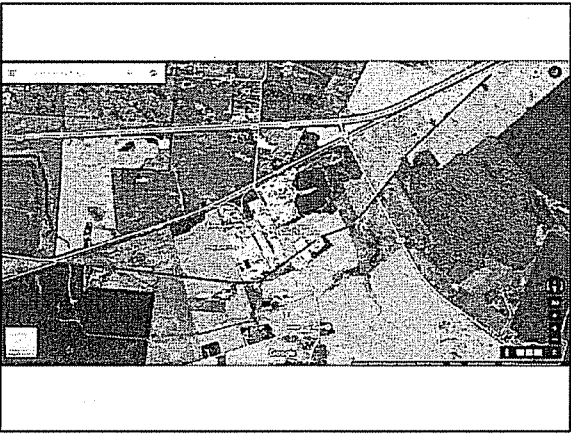
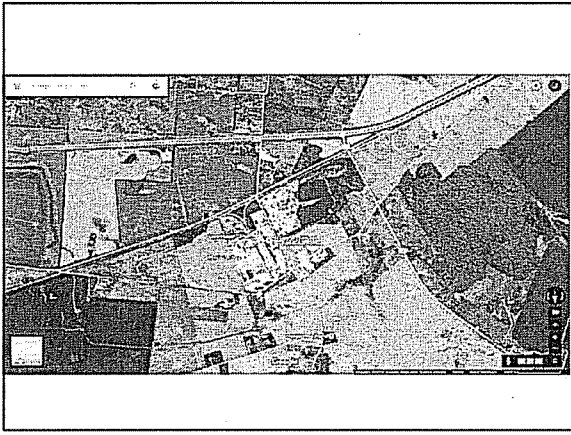
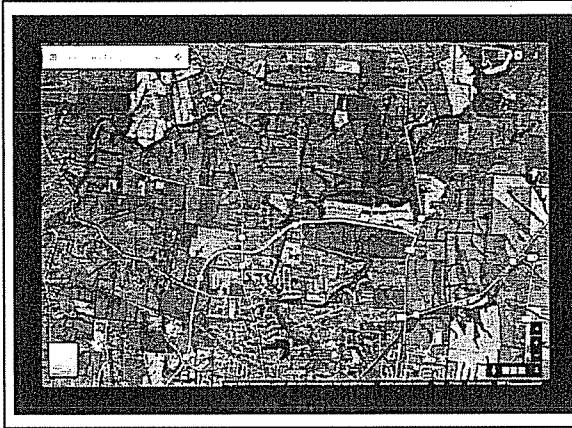


Every Hedgerow Has a History:  
Using Archives to Discover Local  
Heritage

Kentucky Archives Institute  
June 17, 2016



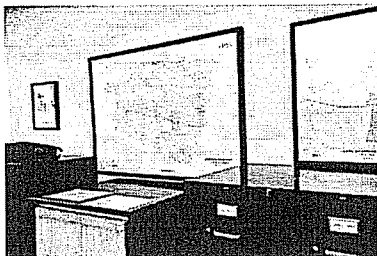


## WHAT THE HECK?

- Where do I start?
- Who do I contact?
- Where do I go?
- Who, what, when, why, and how many?

**Property Valuation Administrator  
(PVA)**

- Start with the map of the county:



**Property Valuation Administrator  
(PVA)**

- Start with the map of the county
- Identify tract map number
- Use tract map to identify tract number
- Tract number references the Property Card
- Property Card provides names of current owner and deed book and page number of latest deed filed
- Make plenty of notes

**COUNTY CLERK'S OFFICE**

- Electronic Indexes and Imaging
  - Search by Name
  - Not Comprehensive in Most Counties
- Index Books
  - Grantor/Grantee Indexes
  - General Cross Indexes

**COUNTY CLERK'S OFFICE**

- Real Estate Records
  - Deed Books
  - Commissioner's Deed Books
  - Surveyors Books
  - Mortgage Books
  - Right-of-Way Books
  - Drainage Books
    - (aka "Ditch Books")

**COUNTY CLERK'S OFFICE**

- DEED BOOKS
  - Property Descriptions
  - Chain of Title

**COUNTY CLERK'S OFFICE**

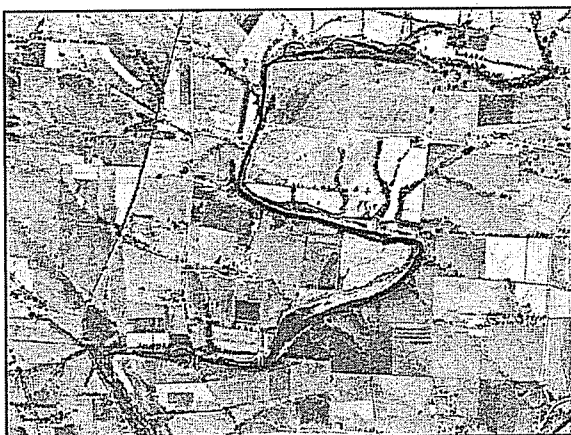
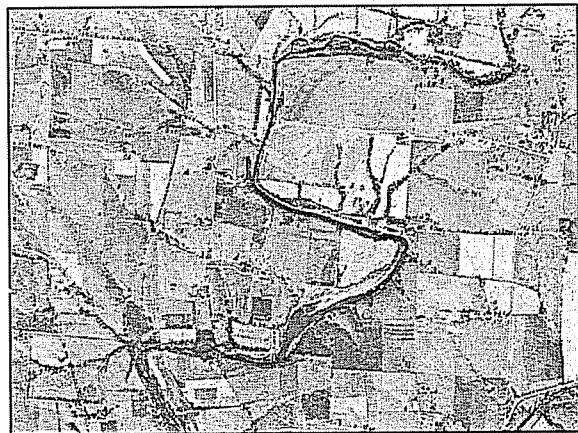
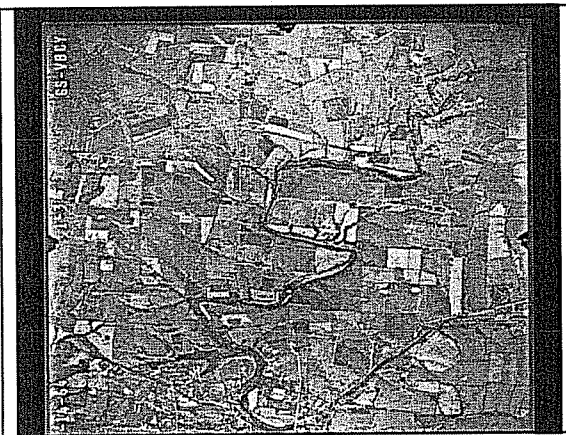
- COUNTY COURT ORDER BOOKS
  - All the business of the county court
  - Road Orders
  - Condemnation Orders

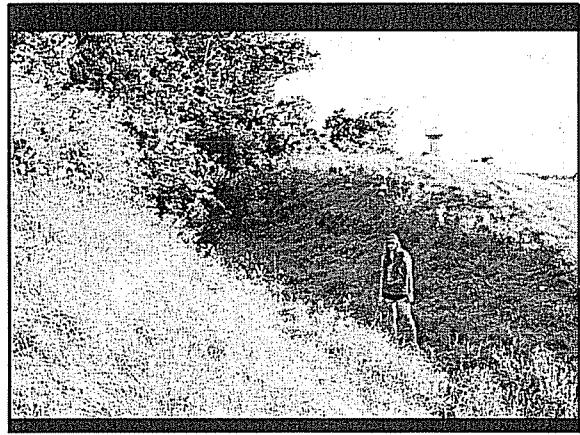
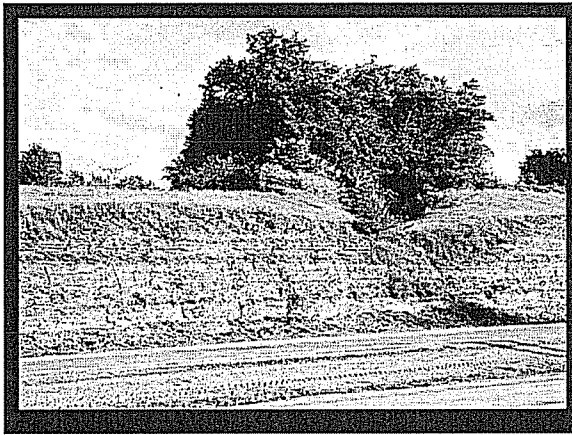
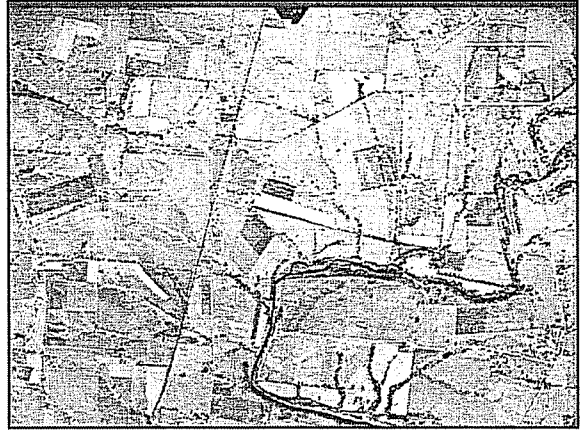
**COUNTY CLERK'S OFFICE**

- **PROBATE RECORDS**
  - Wills
  - Executor, Guardian, etc. Records
  - Inventory and Settlements

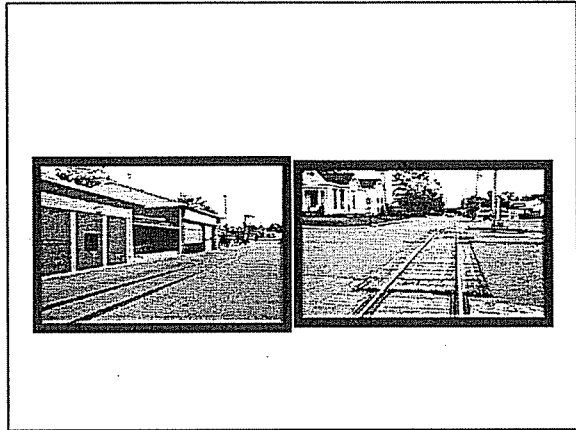
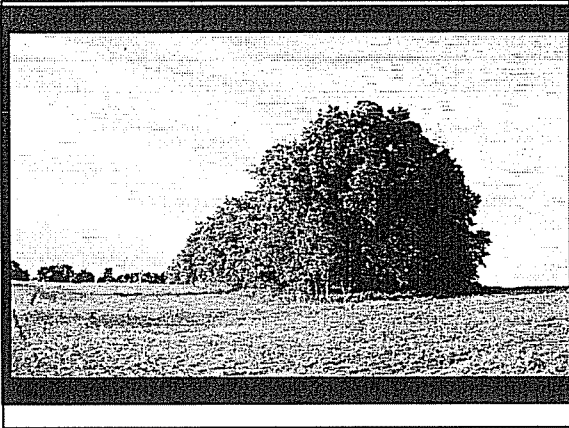
**Kentucky Dept. for Libraries and Archives (KDLA)**

- **County Clerk Records**
  - Security Microfilm
  - Original Records
- **Circuit Court Case Files**
  - Criminal
  - Civil
- **U.S. Census Records**
  - General Census
  - Agricultural
  - Manufacturing









## CONTACT INFORMATION



Trace Kirkwood, Mgr.  
Local Records Program

Kentucky Dept. for Libraries  
and Archives

Phone: 502-564-1724  
Cell: 502-229-8529

E-mail:  
[trace.kirkwood@ky.gov](mailto:trace.kirkwood@ky.gov)