

ASTRONOMICAL OUTREACH

Collaboration Across Our Library System

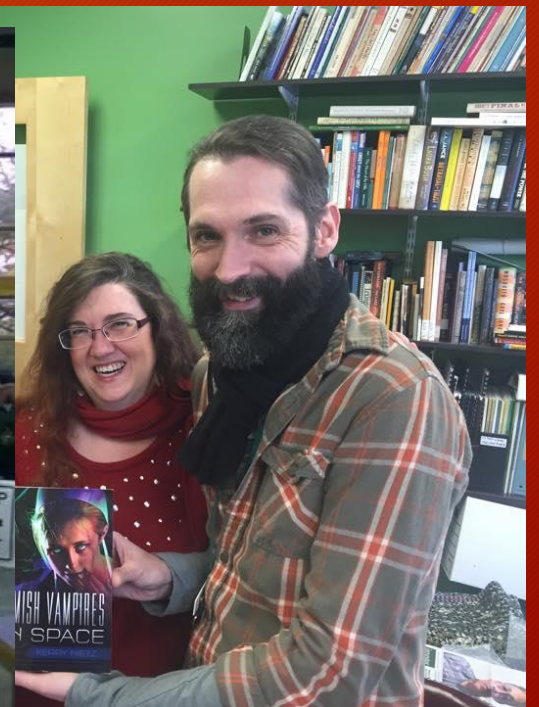
Presented by: Brandon Thompson, M.A., Outreach Services Coordinator
Madison County Public Library



Co-Creating in Our Shared Space

- This ain't no show-and-tell
- Invitation for collaboration

Welcome to the team!!



Our Culture of Collaboration

- What is a culture of collaboration?
- How did ours develop?



No stone unturned

- Tenacious collaboration
- The concept of “Working out loud”
 - Dreaming it • Doing it • Dumping it

Getting into the community!

- As an Outreach librarian, my M.O. is “get out there!”
- My daily activities
 - I have found that being a librarian opens doors, how about you?

Partnerships: Taking Collaboration into the Community

- Baptist Health Richmond
- St. Joseph Berea
- Berea Parks and Recreation
- Richmond Parks and Recreation
- Telford YMCA
- McCrea Manor
- Berea Health Care
- Berea Senior Center
- Sustainable Berea
- Health Department
- Local Homeschool Co-ops
- Police Departments
- Public Schools
- Central KY Blood Center
- Liberty Place Rehab
- Bluegrass Career and Development Center

Kids Fest!

Reenactments!

Karaoke in the Park!

Dive-In Movies!

Halloween Hoedown!

Civil War

MOVIES IN THE PARK!

Community Festivals too!

Spooky! Trunk or Treat! Easter Bunny!

5th Anniversary Friday!

Y'all ready for this?

- Let's talk programming
- Disclaimer: Some of what I'm about to share with you is my own work, BUT, in the spirit of collaboration, some of the following material is just me reporting about the success of others.
- **FOR YOUR CONSIDERATION:** When we have a culture of collaboration, how is my programmatic “success” different from yours?

My First Library Card

- What is it?
 - Library cards and resource packets given to every child born at local hospital
- How do we collaborate?
 - Graphic design
 - Circulation manager/barcodes
 - Circulation staff/resource list recommendations



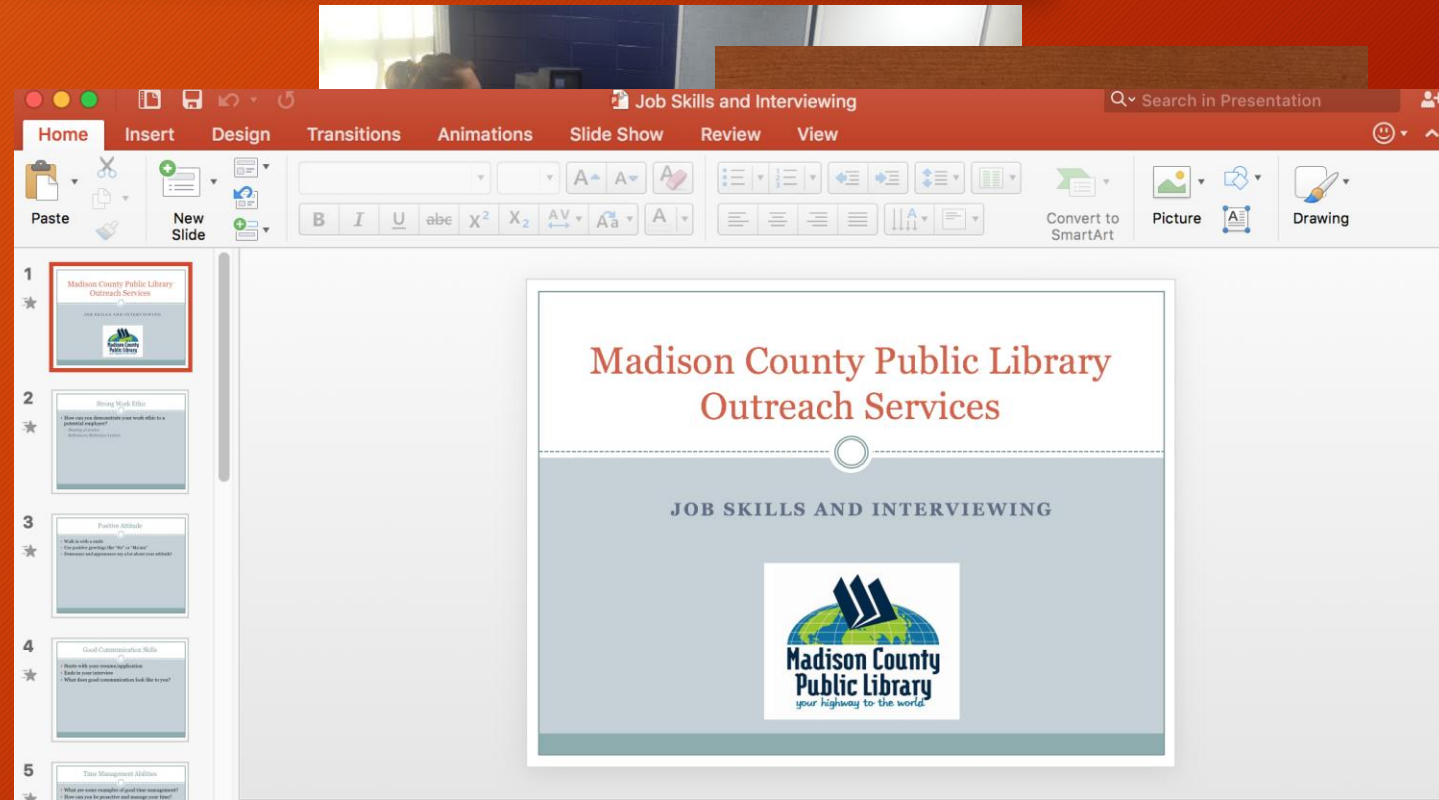
Armchair Travel

- What is it?
 - A fun program that takes seniors all over the world from the comfort of their own homes/communities!
 - Always a little something “extra”
- How do we collaborate?
 - Senior communities often tell us where they want to go, then we find the materials!
 - Resource Services Manager



Career Preparedness Package

- What is it?
 - A two-phase program geared towards assisting youth in their career journeys
 - Phase 1: The Interview Lecture
 - Phase 2: Mock Interviews
- How do we collaborate?
 - Various MCPL team members have been “Interviewers”
 - MASSIVE collaboration with schools and school staff



Living History Days

- What is it?
 - Annual civil war reenactment/educational festival for children
- How do we collaborate?
 - Technology: preparing iPads with Civil War Apps
 - Staff support
 - Special collections
 - Period “bookmobile”
 - Costumes too!



Senior Yoga Series

- What is it?
 - A monthly yoga offering to various senior centers in our community
- How do we collaborate?
 - Adult Programming's Yoga Instructor
 - Outreach's Yoga Instructor



Community Festivals

- What is it?
 - YOU NAME IT! MCPL endeavors to make it to as many community festivals as possible each year. Our goal is to attend every single one!
- How do we collaborate?
 - Photobooth!
 - Demonstration Station!
 - Youth Services plus Outreach
 - T-Shirt launcher
 - Circ Volunteers



GrowAppalachia Summer Foodservice

- What is it?
 - A multi-partner summer foodservice initiative that offers free meals to all children 18 and under.
 - Multiple sites all over our community including on-site at MCPL branch.
 - Almost 14,000 meals served in 2016. 2017 seeks to double that number.
- How do we collaborate?
 - How DON'T we?!
 - Hummel Planetarium, magic shows, bookmobile, library staff, Parks & Rec



Senior Wellness Series

- What is it?
 - Multi-partner collaborative community initiative geared towards better serving our seniors
- How do we collaborate?
 - Outreach + ADP
 - Community partners



Take 25 and Youth Services Partnerships

- What is it?
 - Child identification and family safety event
- How do we collaborate?
 - Outreach + Youth Services
 - Local Police Departments



Movies in the Park/Dive-In Movies

- What is it?
 - Exciting new movies at outdoor venues throughout our community
- How do we collaborate?
 - Technology
 - SWANK Motion Pictures
 - Parks and Rec



Know-it-All Festival

- What is it?
 - Annual celebration of learning
 - Day-long programs in the form of 20-minute “how-to” *microworkshops*
 - Both in-house and Outreach
- How do we collaborate?
 - Finding instructors
 - Technology
 - ALL-NEW Outreach component



ASTRONIA

- What is it?
 - Annual Outreach kick-off to our Know-it-All Festival
 - Multi-partner community collaboration
 - Space science/astronomy
 - STAR WARS!!
- How do we collaborate?
 - ADP and Know-it-All
 - Technology - full movie set-up!
 - Community partners: Parks & Rec, Planetarium, ECU Physics Department, Kentucky Science Center



So...how can all of this apply at YOUR library?

Here are my ideas, but I'd love to hear yours too!

- Outreach Newsletter: Just an E-mail to your fellow staff members...even if you wear other hats, I've found it opens channels!
- Invite yourself to other departments' meetings
- Begin an intentional collaboration or two...even if it feels weird at first!
 - (“But I’m an Outreach Librarian, what am I doing working with Youth Services inside the library?! Weird!”)
- Find your in-house “partner” and EXPAND your services...in-house and out!
- Champion your library and library services all throughout your community
 - Make “calling card bags”
 - Cold call organizations in which you haven't yet offered services

An Outreach Librarian's Mantra

“Don't become a librarian because you love books.
Books are just another (though wonderful) tool in
an ever expanding, multi-media world of
information.

Become a librarian because you love people.”

~Kate Tkacik



Questions?!



**Thank you to the
Institute of Museum and Library Services (IMLS)
for sponsorship of this webinar.**

Follow KDLA on Social Media!

@KDLALibDev



KDLALibDev



SAVE THE DATE

Register on the [KDLA CE Events Calendar](#)

Loose Parts Play for Libraries

Monday, April 15, 10-11 am ET (9-10 am CT)

Disability Etiquette

Wednesday, April 24, 10-11:30 am ET (9-10:30 am CT)

Preliminary Planning for Construction

Thursday, April 25, 10-11:30 am ET (9-10:30 am CT)

The Fundamentals of Researching Kentucky Land Patents

Friday, April 26, 10-11:30 am ET (9-10:30 am CT)

Knowledge Transfer

Tuesday, April 30, 10-11 am ET (9-10 am CT)

More webinars are available on our **Archived Webinars** page:

<https://kdla.ky.gov/librarians/staffdevelopment/kdlaarchivedwebinars/Pages/default.aspx>

Thank you for attending!

Brandon Thompson
Outreach Services Coordinator
Madison County Public Library
brandon@madisonlibrary.org

[KDLA CE Events Calendar](#)
[KDLA Archived Webinars](#)
[Certification Program](#)
KDLA.Certification@ky.gov