

# for the Record

Devoted to Kentucky's State Archives and the Historical Record

Summer 2002

	2	2	3	4	5
I N S I D E	<i>Newly Available at the State Archives</i>	<i>Recognizing our State Archives Interns</i>	<i>Celebrating Dr. Clark's Birthday</i>	<i>Enjoying the Summer Archives Institute</i>	<i>Consider a Charitable Bequest</i>



## *Our Past Deserves a Future*

*October 6th - 12th, 2002*

*"And to Kentuckians of the past... Your roots are firmly planted and will be nourished in hospitable soil at the... Archives." - Thomas D. Clark*

### **Kentucky Observes Archives Week, October 6-12, 2002 Governor Signs Proclamation Recognizing Inaugural Event**



Kentucky held its first ever Archives Week October 6-12, 2002, with the theme "Kentucky Archives Week: Our Past Deserves a Future." The Kentucky State Historical Records Advisory Board, the Kentucky Council on Archives, and the Kentucky Department for Libraries and Archives coordinated this event with archival repositories around the state, including the state universities, historical societies, public libraries, and other archives in the Commonwealth. Events were held around the state, including workshops, open houses, exhibits, and tours. The Kentucky Council on Archives kicked off the celebration with its fall meeting on October 4 at Locust Grove in Louisville, where the first Kentucky Archives Week award was presented to an individual or institution that has made an outstanding contribution to Kentucky's archives. Check the Archives Week website for further information and a list of all the events at [www.archivesweek.ky.gov](http://www.archivesweek.ky.gov).

### *Clark is Symposium Speaker November 22<sup>nd</sup> At Shaker Village of Pleasant Hill*

The Friends' 2002 Public Archives Symposium will feature noted historian Dr. Thomas D. Clark, who will discuss the research which led to his new book, *The People's House: Governor's Mansions of Kentucky*. Clark, who co-authored the work with Margaret A. Lane, is Kentucky's Historian Laureate and an emeritus professor of history at the University of Kentucky. The Symposium is sponsored by the Friends of Kentucky Public Archives, Inc., and is held in conjunction with the organization's annual meeting and luncheon. For further information, please contact the Friends at P. O. Box 4224, Frankfort, KY 40604, or call 564-8300, ext. 252.

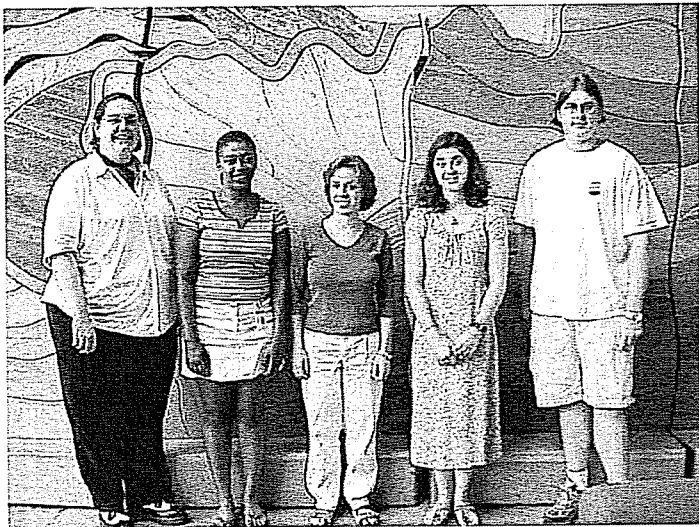
## Archives Research Room Hours and Closings

KDLA's Archives Research Room is located at 300 Coffee Tree Road, off State Highway 676 in Frankfort. The Archives Research Room is open to the public from 8 a.m. until 4 p.m., Monday through Friday. It is closed on Saturday, Sunday and on official state holidays.

Ample free parking is provided outside the KDLA building.

Special closings, August through November 2002 –  
Please mark your calendars!

- November 11 (Monday) for Veteran's Day
- November 22 (Friday - close at noon) for the Friends' annual Public Archives Symposium
- November 28, and 29 (Thursday and Friday) for Thanksgiving



Christine Wells, Ivy Davis, Ann Baughman, Annie Prewitt, and Steve Hughes have served as interns for the Public Records Division this summer. Their hard work has been greatly appreciated.

## Planning Board Meets at KDLA; Sees, Hears of Archival Needs

The state's Capital Planning Advisory Board held a regular business meeting at KDLA on July 10<sup>th</sup> and heard KDLA Commissioner James A. Nelson review the case for an archival building expansion and the need to plan for the state's electronic records future. After the meeting, a number of

Board members toured archival storage facilities on KDLA's third floor, questioned staff about current challenges, and got a firsthand look at the department's archival services program.

**For The Record**  
Vol. 3, No. 4  
A publication of the  
Friends of Kentucky  
Public Archives, Inc.  
P.O. Box 4224  
Frankfort, KY 40604

# Newly Available at the State Archives

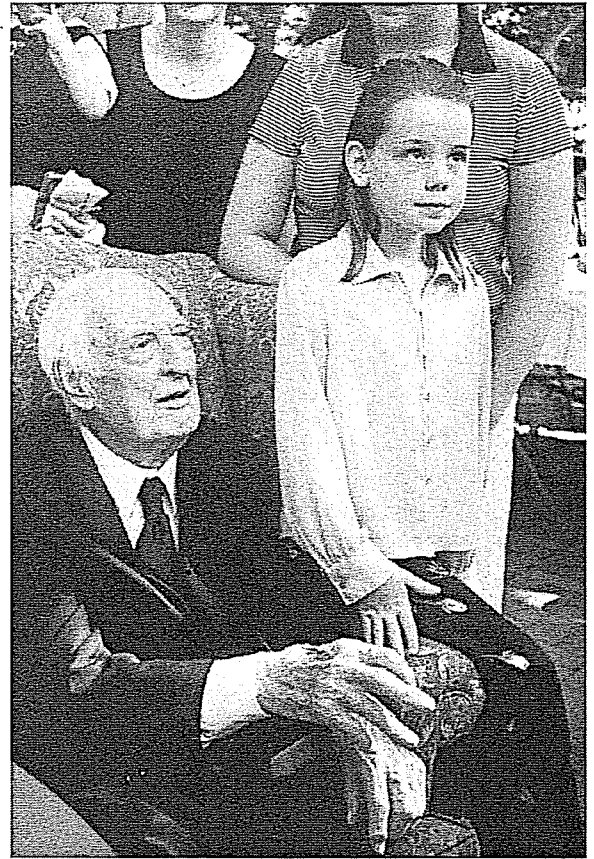
The first railroads in Kentucky were constructed in the 1830's. By the time of the Civil War the rail system had become, along with steamboats, a major mode of transportation in the Commonwealth. Railroads almost completely supplanted steamboats in the latter half of the 19<sup>th</sup> century, with primary lines and spurs reaching into every part of the state. In 1880 the legislature established the Railroad Commission and gave it the authority to examine and regulate the operations of the railroad companies to some extent. The constitution of 1891 codified this authority to a greater degree.

KDLA staff has recently accessioned two volumes of the original **Minute Books** of the Railroad Commission, covering the years 1892-1913. (KDLA had previously accessioned photocopies of the minutes of the Commission dating back to 1882.) The duties of the Commission included hearing complaints concerning railroad services and assessing fines for unfair freight and passenger rates. The minute books reflect the mistrust and acrimony felt by many of the manufacturers and farmers of the time who were forced to make use of the services of the railroads to ship their goods, in the absence of any other method of transportation. For example, the minute book entry for June 20, 1906 states that the Commission met "...for the purpose of rendering a decision in the general complaint of the Commonwealth of Kentucky against the Louisville & Nashville Railroad Company and others charging extortionate freight rates to and from all points within the state." The entry includes a lengthy discussion of the results of the Commission's investigation of these charges. The minutes contain many such complaints brought before the Commission and the resulting dispositions of those complaints.

The Commission was also empowered to assess the value of the railroads with tracks and property in the state for tax purposes. KDLA staff has recently accessioned a series of **Railroad Assessment Books**, covering the years 1892-1915. These volumes were compiled annually, and list each railroad, the assessment per mile of track, and the mileage in each town and county for that railroad. For example, the L&N "Lexington and Paris Branch" was assessed at \$10,000 per mile. With 8.82 miles of track in Bourbon County, one tenth of a mile in the City of Paris, 9.04 miles in Fayette County and 1.34 miles in the City of Lexington, the total valuation for this branch would have been over \$190,000, not counting any additional property held by that company. Not all railways were assessed at the same rate. The L&N "Main Stem" was appraised at \$40,000 per mile of track, while the rate for the Frankfort & Cincinnati was only \$6,000 per mile.

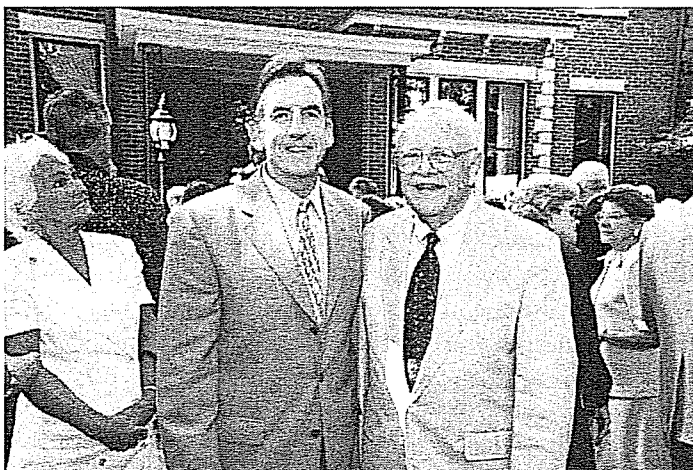
The **Minute Books** and **Railroad Assessment Books** of the Railroad Commission cover a period of tremendous growth for the railway industry, and are a valuable resource for researchers interested in the history of transportation in Kentucky.

**Mark your Calendar!**  
**November 22, 2002**  
**Public Archives Symposium**  
**Shaker Village at Pleasant Hill**  
**Registration Deadline:**  
**November 18th !**

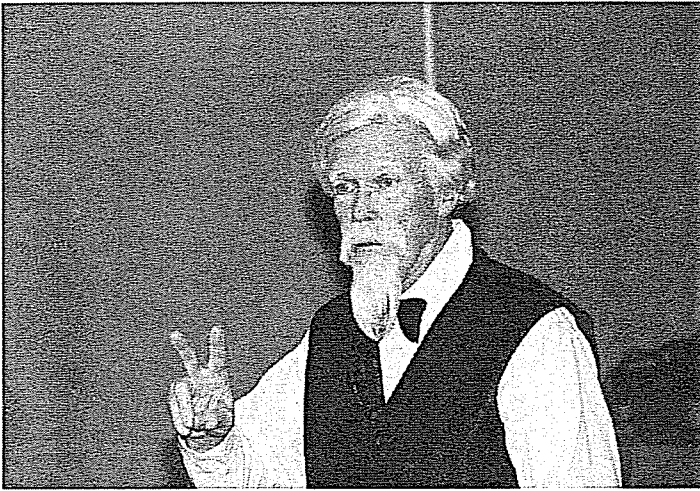


## Summer Reception Marks Dr. Clark's 99<sup>th</sup> Birthday

The garden of Maxwell Place, the home of University of Kentucky President Lee Todd, was the site of a July 11<sup>th</sup> reception honoring Dr. Thomas D. Clark, long time member of the State Archives and Records Commission, the "father of Kentucky archives," and Kentucky's Historian Laureate. Greetings were offered by Dr. Todd and others, refreshments were enjoyed on the seasonally hot day, and dozens of friends greeted Dr. and Mrs. Clark.



# Enjoying the 2002 Summer Archives Institute



## *Finding what you need with Find-It! Kentucky*

Have you tried to decide in which Kentucky state government agency certain services might be found? For instance, where in state government to get a mining permit? Order a birth certificate? Report a consumer fraud? Check a child care license? Government information is now easier to find using the Kentucky Department for Libraries and Archives' new Government Information Locator Service, Find-It! Kentucky at [www.findit.ky.gov](http://www.findit.ky.gov). Modeled on information locator projects in other states, Find-It! Kentucky offers two ways to search state government web sites. Depending on the searcher's preference, state government sites may be searched by keyword or through a standard subject list. Response to Find-It! Kentucky has been very positive, so try this search the next time you have to navigate the state government bureaucracy to search for state government information.

## **Document Management Digitization System Takes Shape**

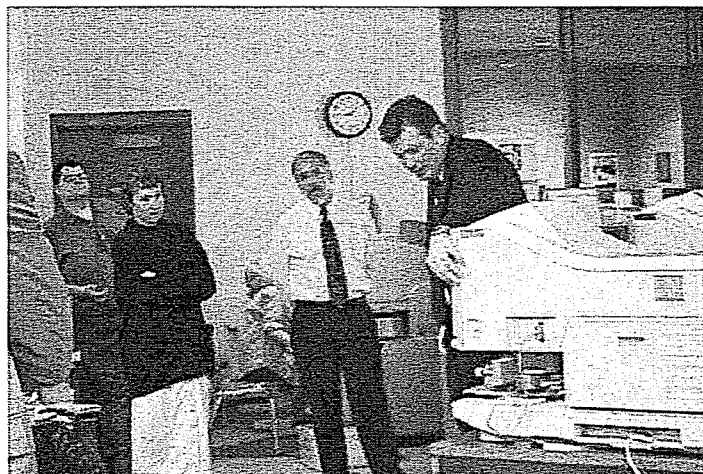
KDLA's emerging Document Management Digitization System (DMDS) is rapidly taking shape in its new home on the second floor of the KDLA building. DMDS will greatly expand the department's document format conversion capacities, heretofore consisting of microfilming and limited digital scanning of paper records. When the full complement of equipment is in place, KDLA's Public Records Division will have the capacity to convert paper documents to digital files, convert digital files to computer output microfilm, or convert microfilm to a digital file. This capacity will be an asset as the department faces significant new challenges in the storage of incoming archival holdings and access to and dissemination of archival information in the age of the Internet.

# *Charitable Bequests: A Way to Remember the Friends in your Will and Enhance Research at the State Archives*

Over the years, many of you have helped the State Archives enhance research opportunities in KDLA's Archives Research Room. Your directed gifts to support the purchase of specialized census microfilm or compact discs, published guides or other research aids, or microfilm reader-printers or other needed equipment have filled important deficits in our program and have been deeply appreciated. These gifts have helped fill needs that existing state dollars alone could not meet. They have made a big difference in the resources available to our on site visitors from Kentucky and across the country, and they have enriched the research experience for all.

Another way in which you can make an important impact on the development of our State Archives is through a charitable bequest to the Friends of Kentucky Public Archives, Inc. With recent market conditions and changing tax laws, it may be a good time for you to review your will and to consider a charitable bequest to the Friends. The Friends is recognized by the Internal Revenue Service as a 501 (c) 3 tax exempt organization. As charitable bequests are fully deductible for estate tax purposes, a bequest is an effective means of achieving some tax relief while creating a lasting benefit for researchers at the State Archives. Bequests can be designed to achieve a variety of purposes.

For further information on opportunities for charitable bequests, please contact Ms. Mary Doyle Johnson, c/o the Friends of Kentucky Public Archives, Inc, at P. O. Box 4224, Frankfort, KY 40604. Thank you for your support and for thinking of us!



Research Room staff receive training on the new microfilm reader-printers recently purchased for use by customers in KDLA's Archives Research Room. Purchase was made possible in part by a grant to the Friends from the Honorable Order of Kentucky Colonels, Inc. Thank you, Colonels, for your generous grant and continued support!

---

*The Friends of Kentucky Public Archives, Inc., is a not for profit membership organization of private citizens concerned with helping the Public Records Division of Kentucky's Department for Libraries and Archives fulfill its role as a vital information link between people and government. The Friends' organization supports the management, preservation, and use of Kentucky's historic public records and serves as an advocate for the Kentucky State Archives, which the division manages. For further information, contact the Friends at P.O. Box 4224, Frankfort, KY 40604.*



Friends of Kentucky Public Archives, Inc.

---

Yes, I would like to renew my membership in / become a member of the **Friends of Kentucky Public Archives, Inc.**

My check for \_\_\_\_\_ made payable to the Friends of Kentucky Public Archives, Inc., is enclosed. Membership benefits include a quarterly newsletter, a membership pin, and invitations to workshops, special events, the Kentucky Archives Institute, the Public Archives Symposium, and the annual meeting. Gifts to the Friends beyond the basic membership are tax deductible.

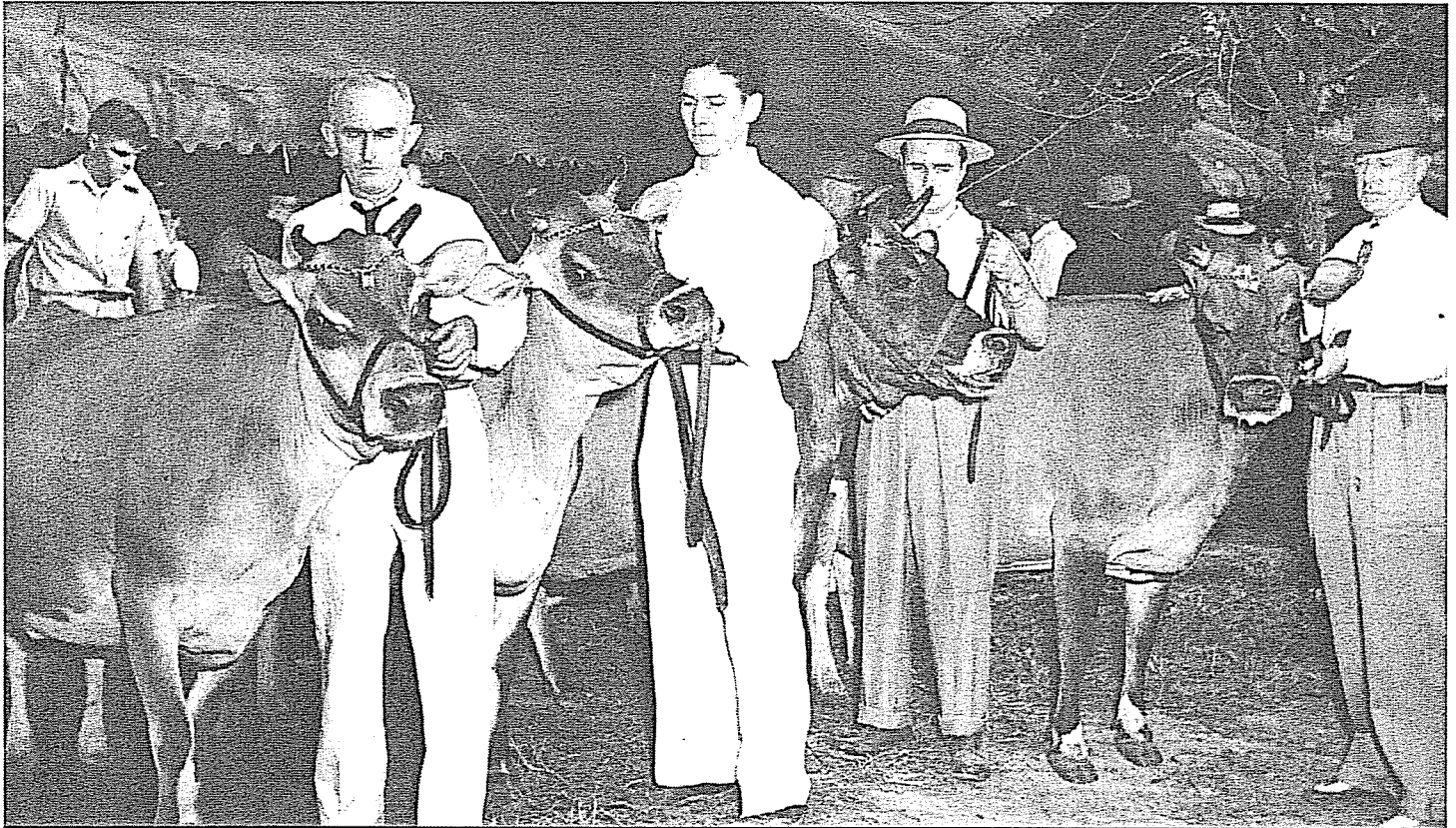
Name: \_\_\_\_\_

Address: \_\_\_\_\_ City: \_\_\_\_\_

State: \_\_\_\_\_ Zip: \_\_\_\_\_ Telephone: \_\_\_\_\_ E-Mail Address: \_\_\_\_\_

Membership levels: \_\_\_\_\_ \$15 Individual / Family    \_\_\_\_\_ \$25 Libraries, Genealogical and Historical Societies    \_\_\_\_\_ \$250 Life  
                                  \_\_\_\_\_ \$50 Sustaining                                    \_\_\_\_\_ \$1,000 Corporate

Please clip and mail to: Friends of Kentucky Public Archives, Inc., P.O. Box 4224, Frankfort, Kentucky 40604 • **We appreciate your support.**



*This herd of prize winning Jersey cattle was one of the many attractions at the Kentucky State Fair (ca. 1950). (This photograph is from the Department of Public Information collection, in the State Archives holdings of the Public Records Division, Kentucky Department for Libraries and Archives).*

---

Friends of Kentucky Public Archives, Inc.  
P. O. Box 4224  
Frankfort, Kentucky 40604