

Free Antique Appraisals

**Have something that is worth something?
Find out at Pike County Public Library**

3rd Thursday in October...



Presenter, Charlene Hopkins
charlene@pikelibrary.org





Mountaineer Auctions

Roger Mullins

P.O. Box 787

Clendenin, WV 25045

Phone: 304-548-4056

Email: Mevets64@aol.com

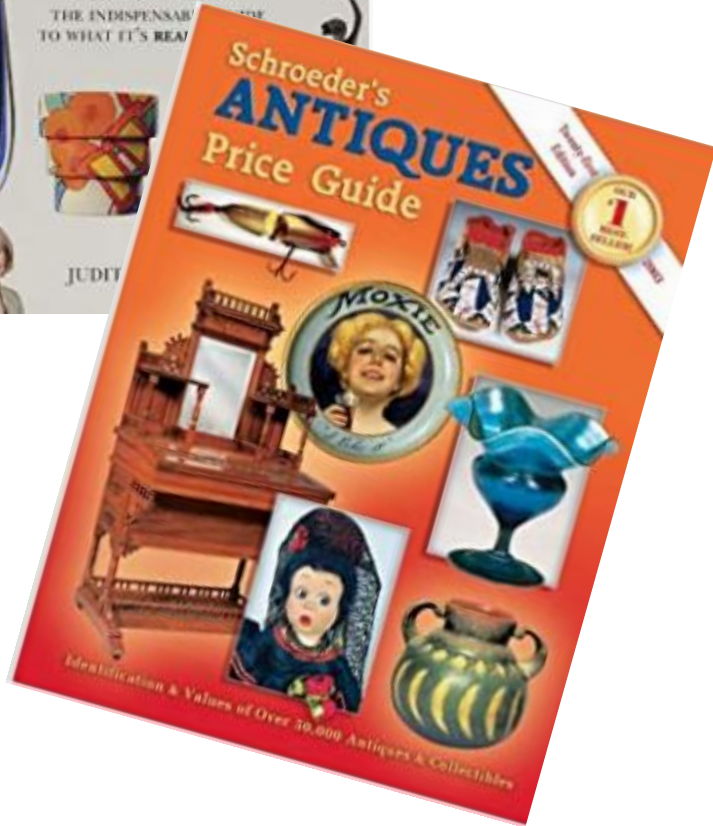
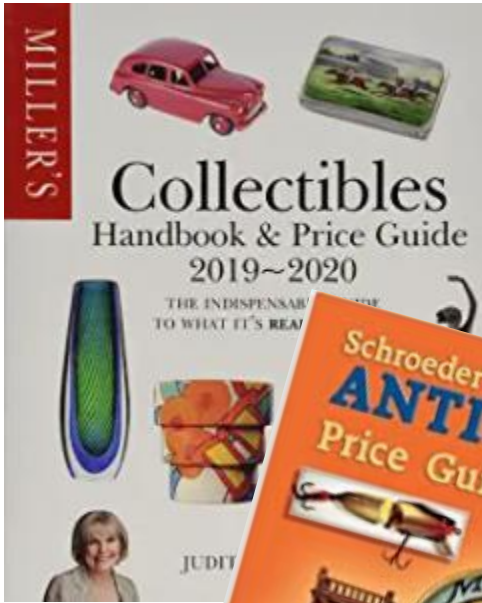
Web: www.mountaineerauctions.com

**Pike County Public Library District
began hosting Free Antique Appraisals
17 years ago...**



Charlene Hopkins, presenter of Program from PCPLD
Appraisers: Roger Mullins & R. Stephen Mullins, ISA
Mountaineer Auction, Clendenin, WV

Why we started the program...



Increase in circulation of antique books.



- Family Heirlooms
- Flea Marketing
- Yard Sales
- People love Junk!
- Junk may be Treasures



Finding Appraisers

Search for local appraisers

Check out auctions

Antique stores

Search online resources for close-by auctioneers

Ask for recommendations

Try to find at least one appraiser who is accredited ISA



<https://www.isa-appraisers.org/find-an-appraiser>

A qualified ISA-educated appraiser is equipped to provide you with an accurate and complete appraisal. Like with a medical issue, you can always get a 2nd opinion!

★ Each item will be given a verbal estimate of value
FREE of CHARGE!

★ Some items, such as musical instruments, may require additional time outside of the appraisal date to determine value.





<https://www.gotoauction.com/>



Auctions by State

Alabama	Nebraska
Alaska	Nevada
Arizona	New Hampshire
Arkansas	New Jersey
California	New Mexico
Colorado	New York
Connecticut	North Carolina
Delaware	North Dakota
Florida	Ohio
Georgia	Oklahoma
Hawaii	Oregon
Idaho	Pennsylvania
Illinois	Rhode Island
Indiana	South Carolina
Iowa	South Dakota
Kansas	Tennessee
Kentucky	Texas
Louisiana	Utah
Maine	Vermont
Maryland	Virginia
Massachusetts	Washington
Michigan	West Virginia
Minnesota	Wisconsin
Mississippi	Wyoming
Missouri	Washington DC
Montana	

Nearby Cities

Cincinnati(61)
Covington(56)
Elizabethtown(51)
Fairfield(50)
Florence(47)
Frankfort(36)
Ft Mitchell(34)
Georgetown(18)
Independence(48)
Jeffersontown(52)
Jeffersonville(45)
London(10)
Louisville(57)
Loveland(39)
New Albany(45)
Newport(33)
Nicholasville(18)
Paris(15)
Richmond(19)
Somerset(13)

Major KY Cities

Bowling Green(12)
Lexington(15)
Louisville(57)

Selecting a Date & Time

- Know your target audience.
- What day would be best for them?
- What time of day would be best for them..



PCPLD holds free appraisals on the 3rd Thursday of October each year from 3:00 to 7:00 PM. Being held at the same time each year, patrons can mark their calendars in advance. Holding it after 5:00 allows most working patrons to get in for appraisals after work.

*PCPLD's appraisers only make verbal estimates;
All appraisals are free to library patrons.
Tips for the appraisers are welcome but not necessary.



Where do we start...


Working with the appraisers and deciding how long the appraisals will last, here are questions to consider:

1. How many items can be appraised within the time allowed for the program?
2. How many items per patron can we allow?
3. How many tickets can we reserve?



*Our appraisals are for 4 hours; we take a break at 5:00 which gives people time to get to the library after their work ends.

Limit 2 items



Ticket # 001

Name _____

Antique Appraisals
Pike County Public Library
October 21, 2021 3:00 –7:00 PM

PLEASE SIGN IN
Your name will be called from
the sign in sheet & not from
your ticket number.

Each patron is given a ticket to have 2 items appraised. If time allows they can come back and have more items appraised. This helps to keep appraisals moving so people with only 1 item will not have to wait very long. Without this rule, my granny would have brought in 75 what-nots which could take up the entire program.

A total of 100 tickets are reserved. We do accept walk-ins but, they must have a library card.

How many appraisers will we need?



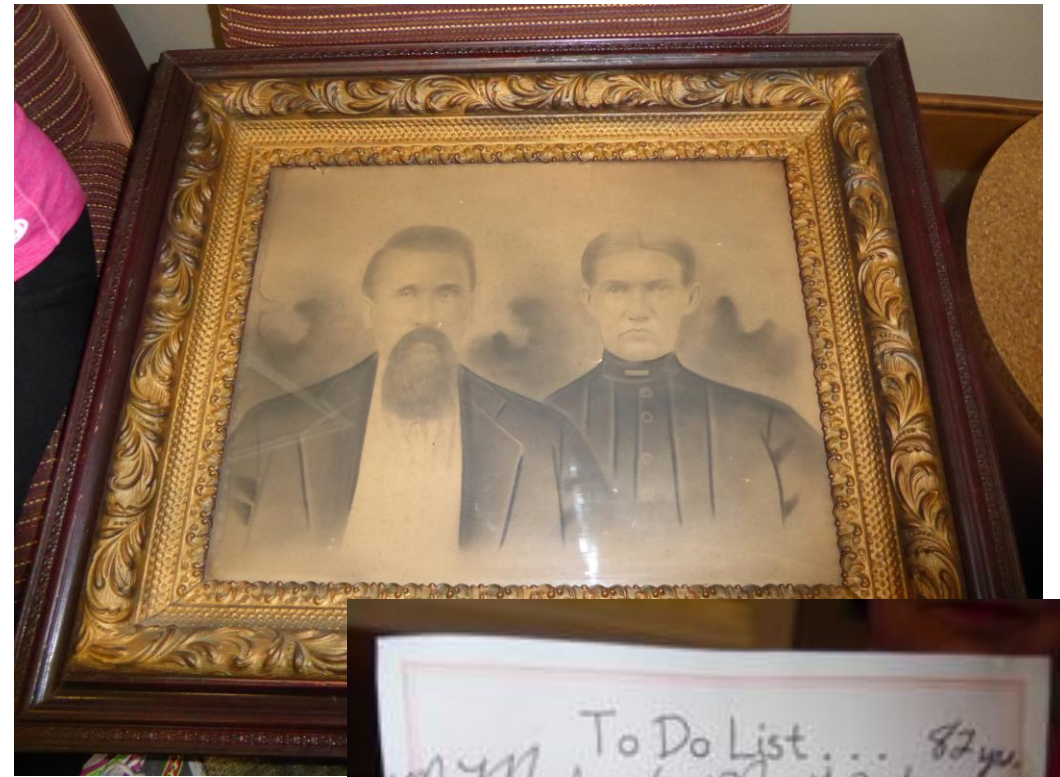
More than one appraiser will:

Allow appraiser to look at items they may have more experience with

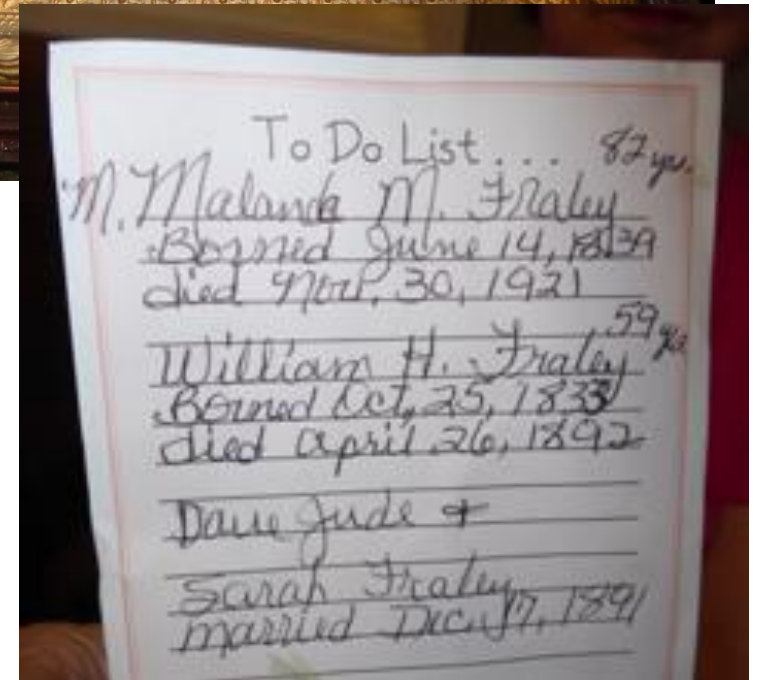
Allow appraisers to discuss items with each other.

Allow time to give a brief history of the items.

Allows the line to move faster and smoothly.



Do's and Don'ts...what you should look for



**Please feel free to contact me if
you have any questions...
Happy Antiquing!**

Charlene A. Hopkins
Special Collections Librarian/Supervisor

Pike County Public Library District
Email: charlene@pikelibrary.org
Phone: 606.437.6001 |
FAX: 606.945.0038



APPRAISAL PROGRAM

AT HACKLEY PUBLIC LIBRARY



HACKLEY
Public Library

Everything Imaginable.



HOW DID WE FIND THE APPRAISER?

- He found us!

- Email



ASK MIKE THE APPRAISER
WHAT'S IT WORTH?

WHAT'S IT WORTH
ZOOM PROGRAMS
AVAILABLE NATIONWIDE

Looking for a fun and interesting Virtual Program for your Group? Then book a **Mike Ivankovich** ZOOM "What's It Worth" Appraisal Event where attendees have **Mike** appraise their treasures...while they remain in the comfort and safety of their own home. **Mike** is an *Antiques & Home Downsizing Expert, Author,*

Listen to **Mike's** "What's It Worth"

INTEREST IN PROGRAM

- Registrants who shared items
- Registrants who were viewers
- How to register - Google form

ADVERTISING

- Print
 - Flyers, Newsletter, etc.
- Online
 - Calendars, social media, eNewsletter, etc.
- Radio, Television, etc.

WHICH PLATFORM?

- Zoom



zoom



WHAT WAS THE PROCESS?

- Introduction
- Appraiser's presentation
 - Background, book, appraisal process
- Sharing

SHARING PROCESS

- Library Host facilitates sharing process
- Library Host – Sharer – Appraiser
 - Repeat



FEEDBACK FROM REGISTRANTS

- Chat box
- Received emails
- For future reference: online survey

REPEAT PROGRAM?

- Overall positive outcome
- Issues/concerns
 - Family worth vs. monetary value



**Thank you to the
Institute of Museum and Library Services (IMLS)
for sponsorship of this webinar.**

Thank you for attending!

KDLA.Certification@ky.gov

[KDLA Online Learning Portal](#)



Kentucky Department for Libraries and Archives