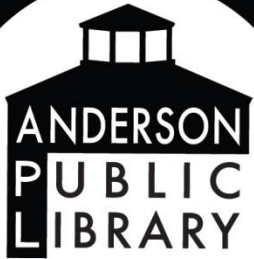




# Mobile Printing

Alison Morgan, Assistant Director  
Anderson Public Library  
Lawrenceburg, Kentucky





# Why Mobile Printing?

## 1. Our Mission

- *Inspiring Curiosity*
- *Fueling Imagination*
- *Building Community*





# Why Mobile Printing?

## 2. Technology on the Go

- Smart Phones
- Devices
- Laptops





# Why Mobile Printing?

## 3. Print on Demand

- Boarding Passes
- Tickets for Events
- Pictures
- Last Minute Documents





# How To Get Started?

1. EnvisionWare?
2. LPT:One?
3. Library Document Station?
4. Version 4.9?
5. Call for more information

<https://www.envisionware.com/mobile-printing/>



# Print Simply Anywhere

[www.printeron.net](http://www.printeron.net)

Login

Register My Printer

Free Consultation

Where Can I Print?

Contact

Support



Cloud Printing

Printing Software

Enterprise Printing

Mobile Printing

Printing Apps

## PrintSpots Directory


Welcome to the PrintSpots® Directory. This directory allows you to search for and print to all PrinterOn public print locations.

With thousands of mobile printing locations to choose from, printing on-the-go is easy and convenient. Print emails, attachments, photos, boarding passes, web pages and more from your [smartphone](#), [tablet](#) or [laptop](#) to many of the locations below.

(Not all locations listed in the PrinterOn Directory are public printing locations. Some may be located at businesses who use the service to provide printing for their guests and are not accessible to the general public.)

Select your location below

[Search All](#) > [United States](#) > [Kentucky](#) > Lawrenceburg

[ACPL Anderson County Public Library](#)   
114 N. Main Street  
Lawrenceburg, KY 40342  
UNITED STATES



# Make it Accessible

1. Library's Website
2. Apps (IOS and Android)
3. Email (B&W and Color)
4. Self Service Kiosk
5. Train Staff





# Library's Website

[www.aplkentucky.org](http://www.aplkentucky.org)

The screenshot displays the Anderson Public Library website. At the top left is the library's logo. The navigation menu includes links for Home, About Us, Contact Us, Library Resources, Services, Events, and News. The 'Library Resources' dropdown menu is open, showing 'Digital Resources', 'Room Reservations', and 'Mobile Printing', with 'Mobile Printing' circled in red. Below the navigation is a large banner image of a woman reading to a child, with the text 'Inspiring Curiosity'. On the right side, there is a vertical sidebar with four buttons: 'Find/Renew a Book', 'Digital Resources', 'Services', and 'Events'.





# Library's Website

Users of the Anderson Public Library can print from home or via their mobile device using our mobile printing service. [Click here](#) or on the button below to upload your document to our service. Then just stop by the library to pay and pick up your printed documents. Black and white prints are \$0.15 a page and color prints are \$0.50 a page.



*Mobile*  
**Printing**

Users of the Anderson Public Library can print from home or via their mobile device using our mobile printing service. Click here or on the button below to upload your document to our service. Then just stop by the library to pay and pick up your printed documents. Black and white prints are 15 cents a page and color prints are 50 cents a page.



## Mobile Printing Service

Welcome to our Patron Printing service. Print virtually any document or web page from your Internet connected PC to one of our Library printers.




There is no additional software required. Simply follow these steps:

114 N. Main Street  
Lawrenceburg, KY 40342  
UNITED STATES

Monday - Thursday: 9:00 a.m. - 8:00 p.m.  
Friday - Saturday: 9:00 a.m. - 6:00 p.m.  
Sunday: 1:00 p.m. - 6:00 p.m.

### Four Easy Steps:

1. Pick Printer
2. Email Address
3. Browse for Files
4. Click green icon

 <b>Printer</b>  <input type="radio"/> Black and White Printer <input type="radio"/> Color Printer  <input type="button" value="Details"/>	 <b>User Info</b>  Email address: <input type="text"/>  Your user information is used to uniquely identify your print jobs.  Use this information to obtain your document in the Library printing facility.	 <b>Select Document</b>  File or URL: <input type="text"/> <input type="button" value="Browse..."/>  Browse your computer files to select the document you wish to print.  You may also enter the URL of a web page you want printed.
--	---	---

 [How do I print from a mobile device?](#)

 [How do I print a boarding pass?](#)

 [What types of files can I print?](#)





# Printable File Types

## Microsoft Formats

- Microsoft Word 2000-2016
- Microsoft Word 2008-2016 for Mac
- Microsoft Excel 2000-2016
- Microsoft Excel 2008-2016 for Mac
- Microsoft PowerPoint 2000-2016
- Microsoft PowerPoint 2008-2016 for Mac
- Microsoft Visio 2000-2016

## Apache Open Office Formats

- Apache OpenOffice/LibreOffice Writer 2.x to 5.x
- Apache OpenOffice/LibreOffice Calc 2.x to 5.x
- Apache OpenOffice/LibreOffice Impress 2.x to 5.x
- Apache OpenOffice/LibreOffice Draw 2.x to 5.x

## Graphics & Text Formats

- PDF
- Microsoft XPS
- PNG
- BMP
- JPEG
- HTML
- GIF
- TIFF
- RTF
- ASCII Text
- Unicode Text
- ZIP



# Apps (IOS and Android)

A free mobile app is also available to upload documents directly from mobile devices. Called PrinterOn, the app is available below at the Apple App Store and Google Play Store:



After installing the app on your mobile device, all that is needed to use the library's printing service is to tap on the "No Printer Selected" button at the bottom of the screen. Then tap on the "Location" tab which shows an easy to use map to find the library's mobile printer. After tapping on the printer icon above the library's Main Street location, tap on the info icon to show the black and white and color printers. Once you choose one printer, you are now ready to start uploading.





# Email It To Us



## *Mobile* **Printing**

You can also email your document to [acpl-bw@printspots.com](mailto:acpl-bw@printspots.com) for black and white prints or [acpl-color@printspots.com](mailto:acpl-color@printspots.com) for color. You will be sent a release code for the document to retrieve your prints.

[acpl-bw@printspots.com](mailto:acpl-bw@printspots.com)

[acpl-color@printspots.com](mailto:acpl-color@printspots.com)



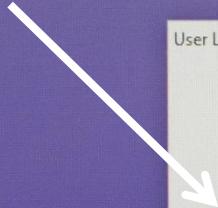
# Self-Service Kiosk





# Self-Service Kiosk

Public Computers

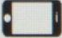


User Login

Please enter the requested information below.  
If you need additional help, please ask a staff member for assistance.


Library Card Number

---

 Enter your email address if you printed from a mobile device or from outside the library.

Email Address

Licensed to:  
**Anderson County Public Library**



Copyright © 1998-2017, EnvisionWare, Inc.



Mobile Printing



# Train Staff to Help

1. Empower
2. X's & O's (appreciation)
3. Consistency
4. Engage
5. Learning Curve?



# Stories from the Trenches





Alison Morgan, Assistant Director  
Anderson Public Library  
[amorgan@andersonpubliclibrary.org](mailto:amorgan@andersonpubliclibrary.org)  
[www.aplkentucky.org](http://www.aplkentucky.org)



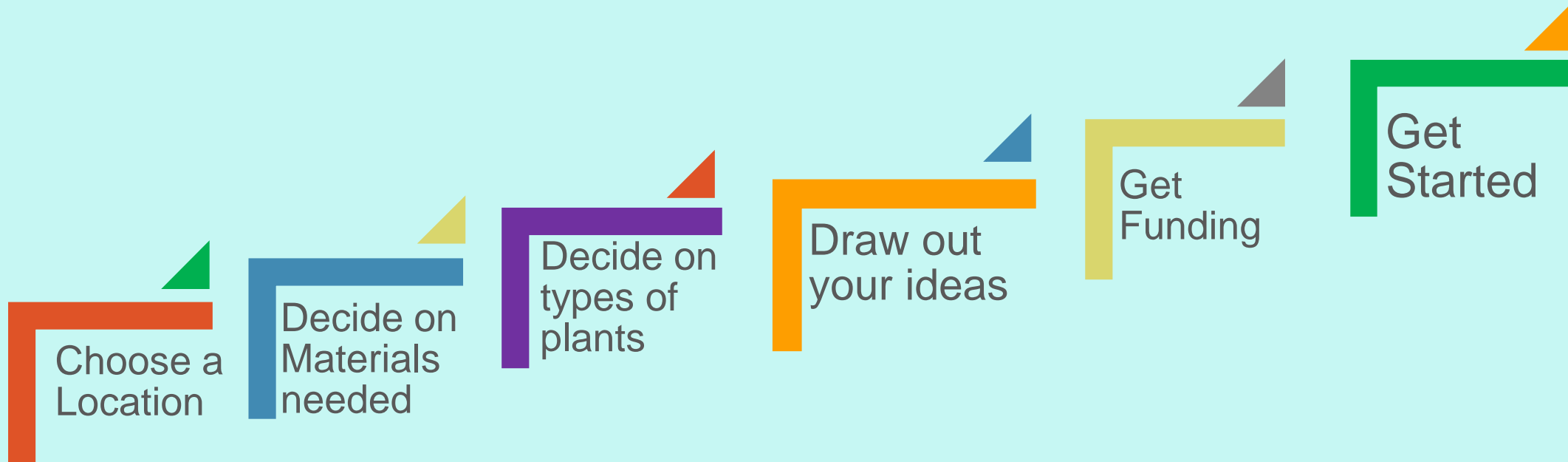
# Creating a Community or Children's Garden

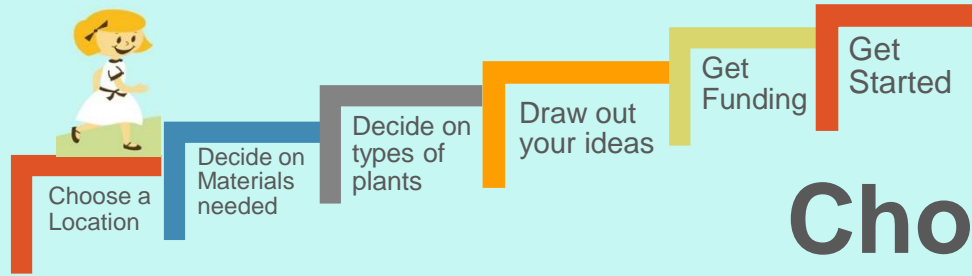
At Your Local Public Library

By **Christie Layne**



# Take It One Step At A Time



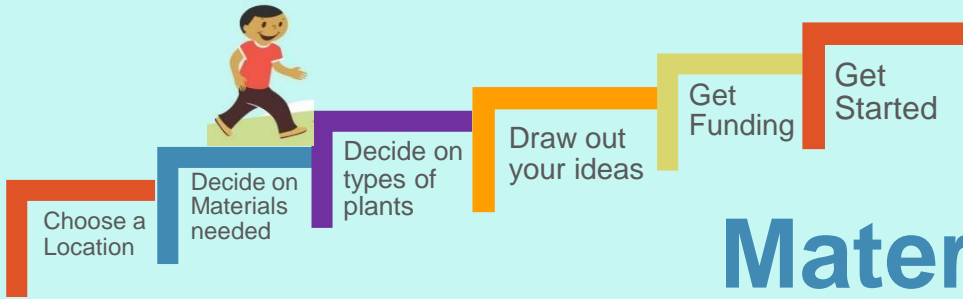


# Choosing a Location

To choose a location, you will need to know a few details:

- How large or small is your garden going to be?
- Knowing what you want to plant will be a deciding factor in where you put your garden.



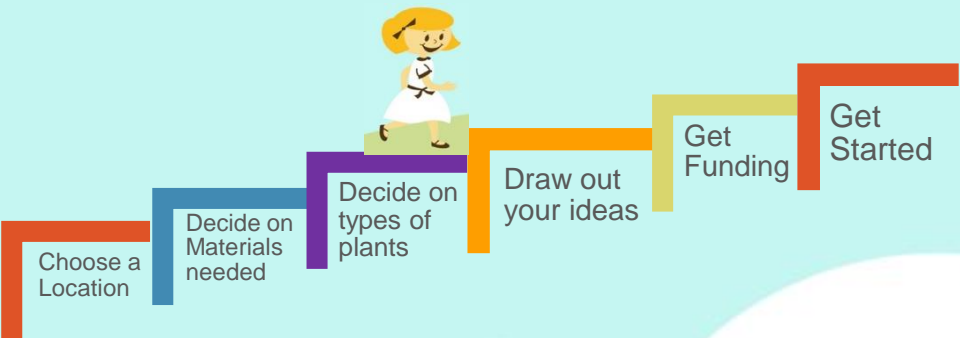


## Materials You Will Need

This is an area where it's best to get help from people who know what they are doing.

- Soil –type and amount of soil will depend on what you want to grow and whether you are using raised beds, containers or planting directly on the ground
- Tools – having many hand tools like shovels and spades will help make planting and digging much easier



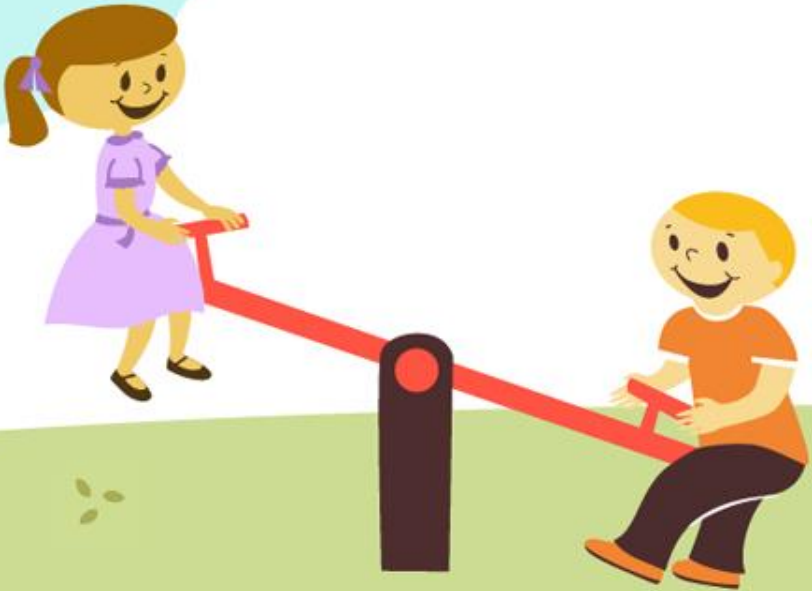


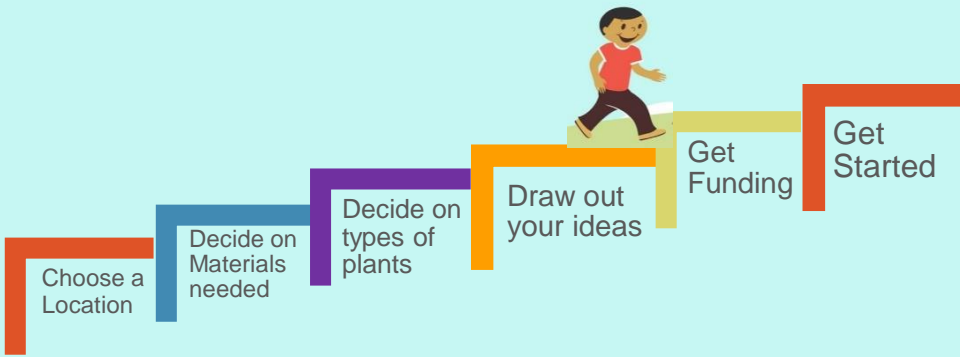
# Choose Your Plants

What you plant will depend on

- Your Region
- How Much Space You Have To Work With
- The Purpose Of Your Garden
- The Colors You Want
- How Much Sun And Shade Your Garden Will Receive Each Day
- How much time do you want to put into maintaining your garden

Do your research to choose the best plant types to meet your goals





## Draw Out Your Ideas

- The larger the project, the more important this step becomes.
- Programs such as Procreate and Adobe Illustrator
- Getting your ideas down on paper can help with conveying those ideas.
- Having an artistic rendering can also be an enormous help in moving into our next step- [Finding the Funds for your Project.](#)





This is a sample project that a co-worker and I put together as a way to share the ideas we had for the large empty area behind one of our libraries with our administrators and those businesses and people in the community who might want to contribute to the project in some way. By breaking the project down into phases and doing it over a long period of time, we are allowing for budget and time constraints.

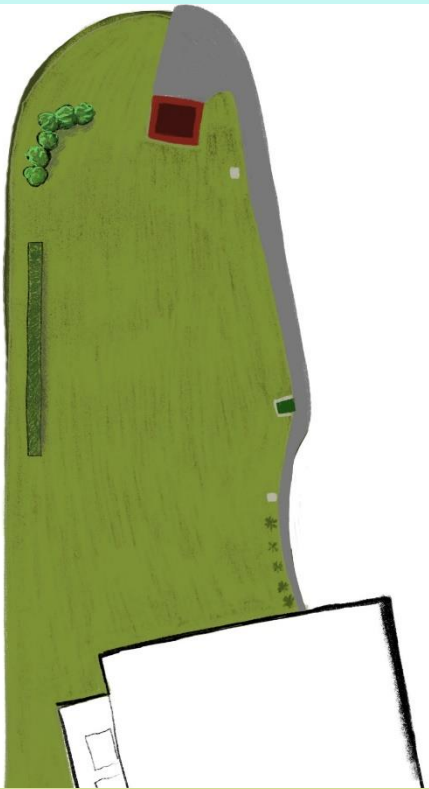
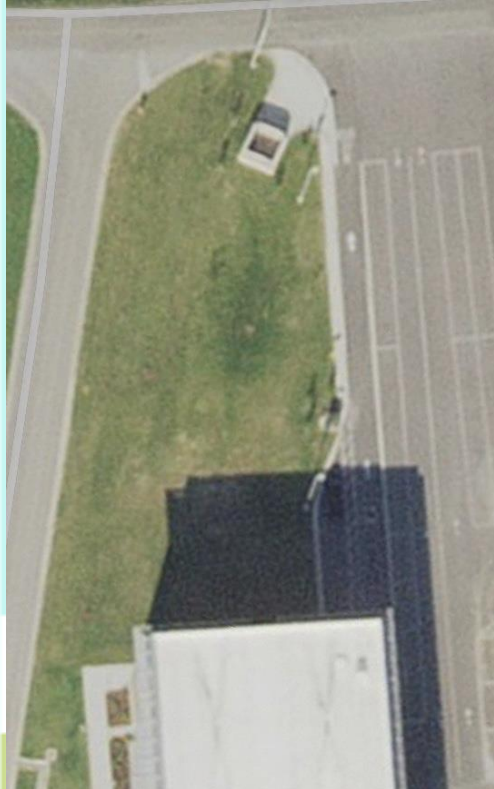
# Pre-Construction

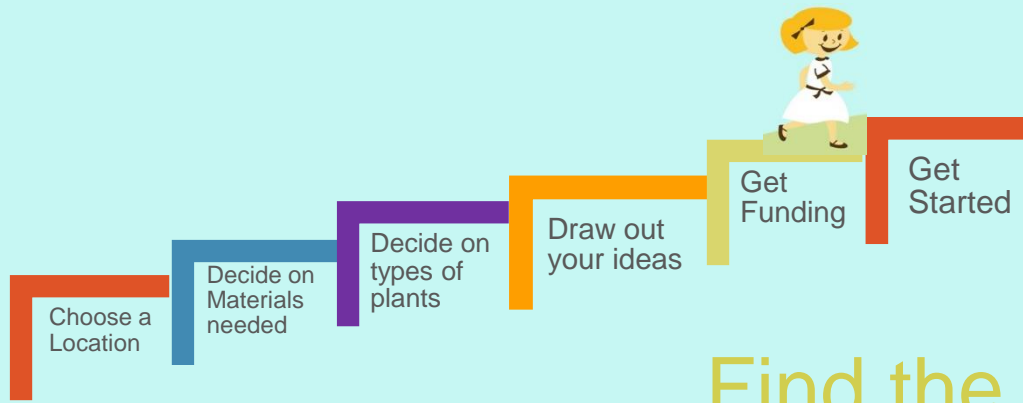
# Phase 1

# Phase 2

# Phase 3

# Finished Product





## Find the Funding to Make it Happen

- Non-profit Organizations
- KY Extension Master Gardener Program
- Local High School And College Groups
- Local Business
- Friends of the Library Organizations



In anticipation of our new Children's garden, our story hour kids planted seeds and small plants in small plastic children's pools. They watered their plants each week and watched them grow.



This Is The Spot We Choose For Our Garden



You Can See This Is An Area Of Full Sun





Choose a Location

Decide on Materials needed

Decide on types of plants

Draw out your ideas

Get Funding

Get Started

# Getting Started

In this photo, you can see our Belfry Area Master Gardeners Group After they have finished putting together the raised garden boxes and filling them with good gardening soil.



Our story hour children were very excited to help get our garden started. We gave them an assortment of child sized gloves and hand shovels and spades to work with.



This is the raised garden after our first planting and some clean up work by the master gardeners.

BELFRY  
BRANCH  
LIBRARY

Impatiens

Tomato

Blueberry Bush

Blueberry Bush

Watermelon

Watermelon

Tomato

Watermelon

Mums

1<sup>st</sup> Year Garden



Who would have guessed that just 6 weeks later we would have a hard time finding the mums under all this watermelon foliage. This is the result of two small packages of watermelon seeds.



Our First Year Garden





1<sup>st</sup> Year Garden





Our 2<sup>nd</sup> year garden was much better planned and thought out as far as placement and organization. This is actually Pumpkin vine mixed in with some watermelon vine. We planted Marigolds to help with insects eating on our garden. Tomato plants and peppers were able to grow better without the watermelon vines choking them out.

## 2<sup>nd</sup> Year Garden



Our Blueberry bushes had an abundance of berries in the 2<sup>nd</sup> year



## 2<sup>nd</sup> Year Garden

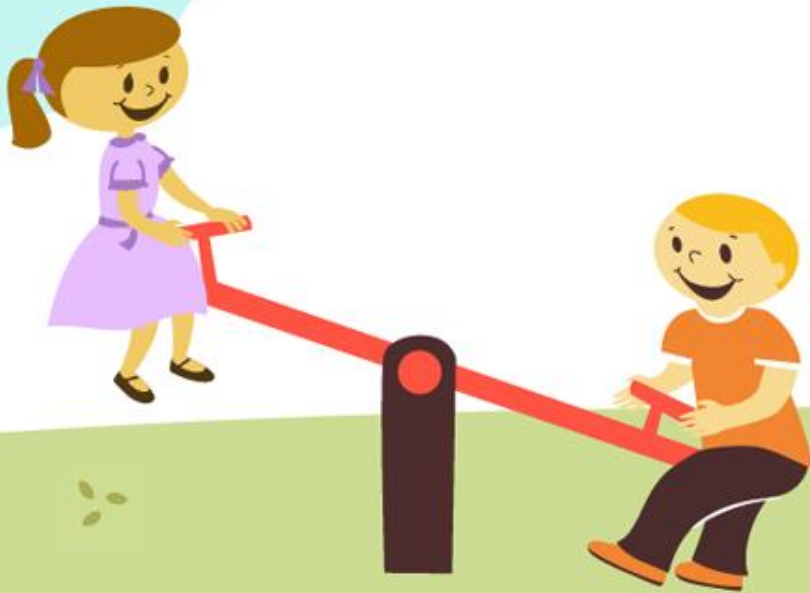


# Other Things To Consider

- Certain plants need additional supplies
- Buying and spreading Mulch will help cut down on weeding
- A garden hose which will reach your garden is a necessity

# Have Fun with your Garden

We love the interest our garden has created in our community. We plan to host a Garden Workshop later this month along with Pike County Master Gardeners. We have invited children from local schools as well as our Story hour classes.



**Children's Garden Workshop**

Hands-on gardening

Ice Cream

Thursday, May 24th

4:00pm

Brought to you by:  
Pike County  
Master  
Gardeners

Belfry  
Public  
Library

The poster features a central illustration of four children (two boys and two girls) wearing aprons and engaged in gardening activities around a wooden planter box. One boy is watering a plant with a yellow watering can, while others are planting seedlings. The background is a light blue sky with a white cloud. Surrounding the illustration are several green leaf-shaped callout boxes containing text about the event.



For several weeks, the community tried to decide if this was a pumpkin or Watermelon.

Which do you think it is?



# Questions and Comments



# Small But Mighty Kentucky Libraries



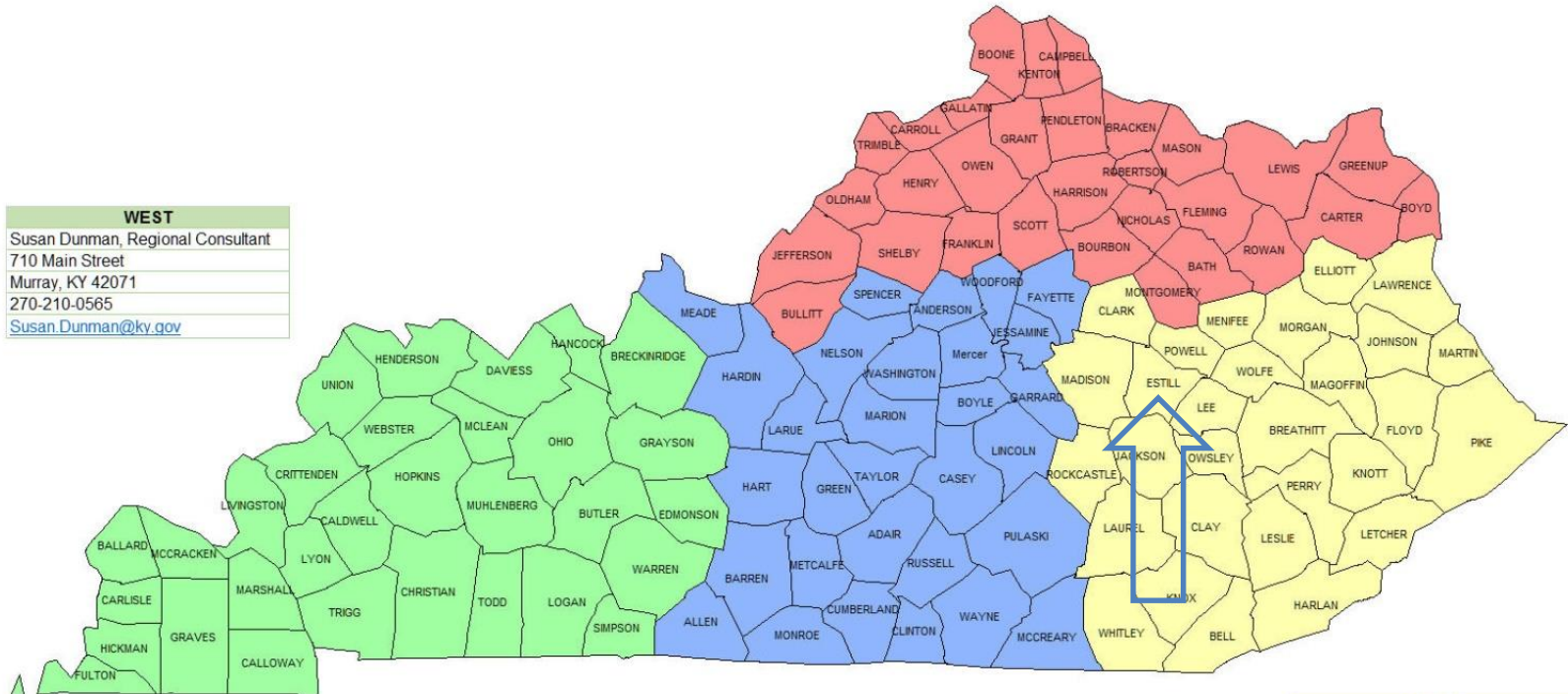
**Kathy Watson, Director**  
**Estill County Public Library**  
**Irvine, Kentucky**



# Where is Estill County anyhow?

**NORTH**  
Chris Bischoff, Regional Consultant  
300 Coffee Tree Road  
P.O. Box 537  
Frankfort, KY 40602-0537  
502-550-5982  
[Chris.Bischoff@ky.gov](mailto:Chris.Bischoff@ky.gov)

**WEST**  
Susan Dunman, Regional Consultant  
710 Main Street  
Murray, KY 42071  
270-210-0565  
[Susan.Dunman@ky.gov](mailto:Susan.Dunman@ky.gov)



**CENTRAL**  
Marsha Griffith, Regional Consultant  
304 South Main Street  
P.O. Box 36  
Somerset, KY 42502-0036  
606-802-6056  
[Marsha.Griffith@ky.gov](mailto:Marsha.Griffith@ky.gov)

**EAST**  
Jeanna Cornett, Regional Consultant  
211 Bridge Street  
Manchester, KY 40962-1203  
606-521-0075  
[Jeanna.Cornett@ky.gov](mailto:Jeanna.Cornett@ky.gov)

# Just how small are we?

- 5700 square ft. library built in 1976
- 20 parking spaces (staff *and* public)
  - Includes 1 handicapped-accessible space
- One community room with seating for 36
- 8 public computers, fiber, Wi-Fi
- 6 full-time staff (including bookmobile librarian) and 2 part-time staff
- We serve a mostly rural population of 14,304 and much of our workforce commutes to Madison, Clark, Fayette or Scott County

# How'd we get started with *Pickin'*?

- For summer reading 2017, we decided to add an evening event for adults that was family-friendly
- Inspired by several local music festivals-*Kickin' it on the Creek (2015-present)* and *Red Lick Bluegrass Festival (1978-2016)* which demonstrated support for/interest in music venues
- Recent Country/Americana/Folk movement in our area
- Our adult programmer began a once-a-month acoustic music jam in 2015 that continued to flourish
- Idea for a library concert series was inspired by a presentation at KLA in 2016
- Young locals expressed need for “something to do” in town
- Local musician/songwriter, Senora May (Childers), approached us about conducting a song-writing workshop at the library and became our contact for other local musicians

# How much did it cost?

- \$100.00 *per performance* (not per performer)
- Cost of having our attorney look over performance contract that we adapted from ***Gale Legal Forms***
- Postage for mailing contracts to performers
- Cost of promo posters (designed and printed in-house)
- Bottled water and the occasional pizza order from *Little Caesar's*
- \$53.64 for 12' x 3' banner from stickersbanners.com

# How did we spread the word?

- Community News section of local newspapers
- WEKU-FM Calendar of Events
- Library Website Calendar of Events
- Library Facebook posts, likes and shares
- Monthly calendar of events
- Local radio stations
- Flyers and posters at local sports bars and public buildings/offices/community partners
- Large banner located at Rising Park
- Small yard sign at front of library
- Staff promotion by word of mouth

# What about location?



- On library property or in close proximity
- Away from noisy, high-traffic streets
- In peaceful, serene setting
- Ambiance is important-hung electric lanterns inside pavilion as days shortened
- Dimmed lights and used lanterns inside library meeting room when we had to move indoors because of weather

# How important is timing?

- Timing is everything!
- If you use an outdoor venue, take seasons into consideration (So far we've done May through Oct.)
- Consider the performers-most musicians are paid to perform on weekends, not on Tuesday nights from 6:30-7:30 p.m.

# Anything else you should know?

- Partner with a public park if you don't have a large enough venue (our mayor waives park fees for us)
- Have back-up location in case of rain (Don't book other groups into meeting room on concert nights)
- Check everything, including toilets, on the morning (and again in the afternoon) of concert dates
- Have at least 2 staff members available to work at each concert
- Can't get too much publicity
- Make changes/improvements after each event



# Pickin' in the Park 2017

## Pickin' In the Park

Summer Concert Series Sponsored by Estill County Public Library and the City of Irvine at Rising Park, on North Court Street directly behind the library. Feel free to bring a picnic supper.



June 6. Geno Seale  
 June 13. Josh Nolan  
 June 20. Chelsea Nolan  
 June 27. Senora May  
 July 11. The Local Honeys  
 July 18. Ethan Hunt

Shows Begin at 6:30  
 Admission is free.



For more information, call the library at 723-3030

## PICKIN' IN THE PARK

Summer Concert Series Sponsored by Estill County Public Library and the City of Irvine at Rising Park, on North Court Street directly behind the library.



September 5:  
 The Jenkins Twins

September 12:  
 Nick Jamerson

September 19:  
 Michael Stallings

September 26:  
 Coby Langham

October 3:  
 Highway 15

October 10:  
 Clay Case

October 17:  
 Aaron Boyd

October 24:  
 Bryan Minks

All shows begin at 6:30  
 Admission is free.



# Pickin' in the Park 2018

## Pickin' in the Park

Spring Concert Series Sponsored by  
Estill County Public Library and the City of Irvine.  
Feel free to bring a picnic supper.



**May 1:  
Samuel Adams'  
Guitar Club**

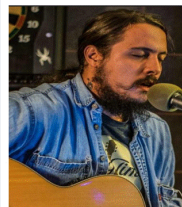


**May 8:  
Aaron Boyd**

Rising Park  
on North  
Court Street  
directly  
behind the  
library.

Concerts  
will be held on  
Tuesdays  
6:30-7:30

**May 15:  
Geno Seale**



**May 22:  
Jenkins Twins**

**May 29:  
Chris & Jenn  
Shouse**



For more information, call the library at 723-3030

# Any questions for us?



We couldn't have done it without Cale, our former teen services programmer, who lined up all of our 2017 performers, set up the venue each week, emceed the concerts, and smiled the whole time!



**Thank you to the Institute of Museum and Library Services (IMLS) for sponsorship of this webinar.**

# Follow KDLA on Social Media!

[@KDLALibDev](#)



[KDLA CE](#)



## **Conducting a Tax Hearing**

Tuesday May 15 – 2:00-3:00 pm ET

## **Guys Read, Too!**

Thursday, May 24 – 10:00-11:00 am ET

## **Library Link Up: Workforce Development Partnerships**

Thursday, June 7 – 1:00-2:00 pm ET

**Save the Date**

Visit KDLA's [CE Events Calendar](#) to register for more webinars!

# Thank you for attending!

## Thank you to our presenters!

Alison Morgan

Anderson Public Library

Christie Layne

Belfry Public Library (Pike County)

Kathy Watson

Estill County Public Library

[KDLA CE Events Calendar](#)

[KDLA Archived Webinars](#)

[Certification Program](#)

[KDLA.Certification@ky.gov](mailto:KDLA.Certification@ky.gov)