

# PROGRAMMING WITH ANIMALS

HOW TO BRING ANIMALS INTO THE LIBRARY

---

---

---

---

---

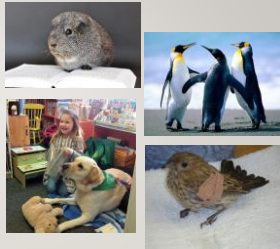
---

---

---

## WHERE THE ANIMALS ARE

- Therapy pet organizations
- Zoos
- Aquariums
- Wildlife Rehabilitators
- Private Companies
- Library Pets



---

---

---

---

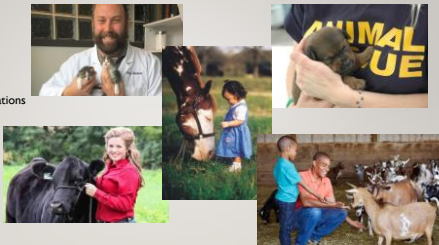
---

---

---

---

- Veterinarians
- Farmers
- Rescue Organizations
- Petting zoos
- Stables



---

---

---

---

---

---

---

---

### MAKE SURE THEY KNOW THEIR STUFF

- Look for reviews on their Facebook, Better Business Bureau ([bbb.org](http://bbb.org)), the state Fish and Wildlife Agency ([app.fw.ky.gov/rehabilitator/New/](http://app.fw.ky.gov/rehabilitator/New/)), and ask your helpful friends on the KDLA listservs. You can also see if they are a state certified Env. Ed. by checking the KEEC website (<https://keec.ky.gov/Documents/EE%20Certification/Certified%20Professional%20Environmental%20Educators.pdf>)
- Call the provider first to get information, then call them back to reserve your program.




---

---

---

---

---

---

---

---

---

---

### WHAT TO ASK TO DETERMINE IF THIS GROUP IS A GOOD CHOICE:

- What certifications do they have?
- Who will provide/present the program?
- What training have they been given?
- How long will the program last?
- What provisions are made for the comfort of the animal(s)?
- What safety precautions do they take to keep the animal(s) and program participants safe?
- How do they want the space for the presentation to be set up?

---

---

---

---

---

---

---

---

---

---

### TIPS TO MAKE YOUR PROGRAM GO SMOOTHLY

#### Room Set-up

- Provide plenty of space up front for the presenter to move around and set out animal crates.
- Unless otherwise directed, provide a table to set small animal containers and bio-facts.
- Provide a visual boundary between participants and the presenter.
- Provide easy access to exits for participants, should they wish to leave during the program.

---

---

---

---

---

---

---

---

---

---

Program set-up

- Check with presenter to see how they would like for you to introduce them. Ask them if they have their own rules of behavior, or if you should provide those.
- With live animal programs, it is important to provide guidelines for behavior.
  - 1) Stay seated on your bottoms at all times while an animal is out of its crate.
  - 2) Stay quiet so that you will hear everything that is said and so you will not frighten the animals.
  - 3) Use Two-Finger Touch. [demonstrate by holding up forefinger and middle finger together] This way you will use gentle touch and not startle the animal. Do not touch the animal anywhere near the face. The presenter will tell you how and where to touch the animal.




---

---

---

---

---

---

---

---

RESOURCES

- Louisville Zoo - Louisville KY <https://louisvillezoo.org/>
- Kentucky Department of Fish and Wildlife - Salato Nature Center – Frankfort KY <https://fw.ky.gov/Education/Pages/Salato-Wildlife-Education-Center.aspx>
- Wildlife Rehabilitators - State-wide <http://app.fw.ky.gov/rehabilitatorNew/>
- Mammoth Cave - <https://www.nps.gov/macal/learn/education/index.htm>
- Liberty Nature Center – Somerset KY <http://www.libertynaturecenter.org/about-1.html>
- Raptor Rehabilitation of Kentucky – Louisville KY <http://www.raptorrehab.org/>
- Second Chances Wildlife Rehabilitation Center – Mt. Washington KY <http://secondchanceswildlife.org/>

---

---

---

---

---

---

---

---

RESOURCES CONT.

- Red Cross Therapy Dogs – Fort Knox KY <https://www.redcross.org/local/kentucky/about-us/our-work/service-to-the-armed-forces.html>
- W.A.G.S. (Wonderful Animals Giving Support) <https://kywags.org/places-we-visit/>
- Honey Hill Farm – Erlanger KY <https://www.honeyhillfarm.net/>
- Newport Aquarium/WAVE Foundation – Newport KY <https://wavefoundation.org/education/wave-on-wheels/aquarium-education-outreach/>
- Kentucky Reptile Zoo - Slade KY <http://www.kyreptilezoo.org/>

---

---

---

---

---

---

---

---

## CONTACT INFORMATION

---

Tonya Swan – Program Supervisor, Children and Teen Services

Louisville Free Public Library, Louisville, KY

502-574-1676

[Tonya.swan@lfppl.org](mailto:Tonya.swan@lfppl.org)

[lfppl.org](http://lfppl.org)



---

---

---

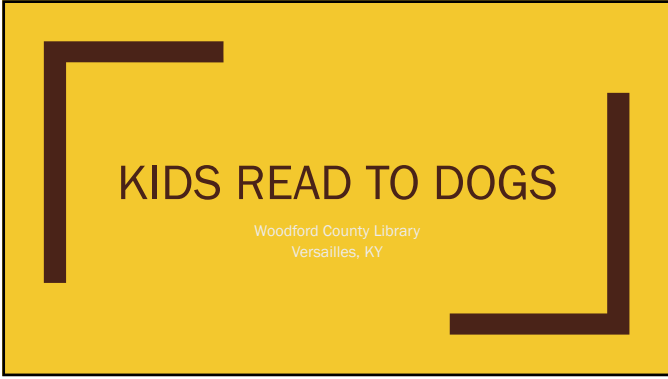
---

---

---

---

---




---

---

---

---

---

---

---

---

Kids Read to Dogs has been meeting at the Woodford County Library since 2008

Originally we called it “Paws to Read” However, people, especially those whose primary language is Spanish, didn’t understand what it meant. So we renamed the program the more obvious “Kids Read to Dogs” to make the intent clearer.

---

---

---

---

---

---

---

---

To learn how to run this program Becky and a reference librarian observed Scott County Public Library’s Therapy Dog Reading Time then we adapted the setup to our library




---

---

---

---

---

---

---

---

We partner with the therapy dog training program, "Love on a Leash" Each child has to have a permission form signed by a parent to participate, but we haven't had any issues, partially due to the dog's beforehand training.



---

---

---

---

---

---

---

---

The dogs get real-life training time. We only get certified or nearly certified canines. The volunteers for the organization are also trained. The best part about the dogs is that they are calm around other unfamiliar dogs, unlike most pets.



---

---

---

---

---

---

---

---

Children take turns reading to the several dogs who attend each time. The dogs' handlers help children when they struggle with words in the text.



---

---

---

---

---

---

---

---

While waiting for their turn the children work on art projects, often dog-related ones.



---

---

---

---

---

---

---

---

A volunteer for Love on a Leash coordinates which dogs & handlers will attend. They are donating their time. We take off July, August, & December to give the handlers a break.



---

---

---

---

---

---

---

---

**Outcomes-**

- 1.Children who attend this monthly program regularly have grown more confident as readers.
2. Some children who were frightened of dogs have become comfortable around them.
- 3.Therapy dog owners like training their dogs here because we are organized, considerate, and they enjoy interacting with kids.



---

---

---

---

---

---

---

---

Dozens of dogs and hundreds of children have participated in the Kids Read to Dogs program over the 11 years we have been running it. Most all of them have enjoyed it. It is a low-cost, high reward program which we plan to continue into the future.



---

---

---

---

---

---

---

---

Becky Munoz  
Youth Services Librarian  
Woodford County Library  
[rmunoz@woodfordlibrary.org](mailto:rmunoz@woodfordlibrary.org)  
859-873-5191



---

---

---

---

---

---

---

---